



IT'S ALL ABOUT ANTI-VIBRATION

The parts you need for a vehicle's anti-vibration system, all from the name you trust, CRP Automotive.

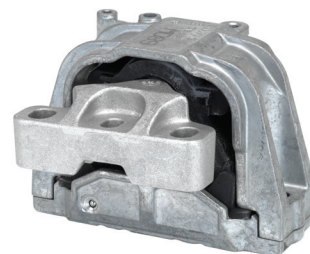
Engine & Transmission Mounts

Engine and transmission mounts secure the engine and transmission to the vehicle while absorbing the vibrations caused by normal operations. A failed mount can cause damage to other components and allow noise and vibrations to pass through the entire vehicle. These are critical components in the engine compartment that should be inspected at regular service intervals. Rein Automotive engine and transmission mounts are designed to match the OE. We do not substitute a rubber to metal mount when the OE specifies a hydraulic mount. Rein Automotive mounts are application-specific and match the design and function of the original OE parts to ensure the best possible ride and performance.

- Over 115 SKUs
- VIO US over 21,148,000/Canada over 2,237,000
- OE mount technology, from traditional metal to rubber to hydraulic design

WATCH THE VIDEO!
Inside the Brands Episode #9.

 /crpautomotive1



Strut Mounts & Strut Mount Kits

The strut mount is one of the components that attaches the strut to the vehicle. Front strut mounts typically contain a bearing or bearing plate that acts as the steering pivot point. The strut mount is an integral part of the strut assembly that helps reduce road and tire noise as well as vibrations. Similar to bump stops, this component takes a beating when the shocks or struts start to fail or lose their effectiveness. When servicing the suspension system, replacing the strut mount along with the other worn components will ensure a smooth and quiet ride and extend the life of the system. For maximum performance, make sure to use the part specified for your vehicle. Rein Automotive strut mounts are application-specific and match the design and function of the original OE parts.

- Over 50 SKUs
- VIO US over 20,368,000/Canada over 2,348,000
- Kits include bearings and/or mounting hardware when applicable

WATCH THE VIDEO!
Inside the Brands Episode #33.

 /crpautomotive1



Bump Stops

Bump stops are the last line of defense in the suspension system and play an integral role to prevent damage to the various suspension components. Bump stops prevent your suspension from bottoming out and help to cushion your ride from normal driving to road hazards such as pot holes and speed bumps. When servicing the suspension system, do not overlook the bump stops; when the shocks or struts start to wear or fail, the bump stops take a beating, greatly reducing their service life and effectiveness. Replacing the bump stops will help reduce vibrations and ensure a smooth ride while protecting the other suspension components. That's why Rein Automotive bump stops are application-specific and match the design and function of the original OE parts.

- Over 50 SKUs
- VIO US over 14,293,000/Canada over 1,605,000
- Available individually or in set

WATCH THE VIDEO!
Inside the Brands Episode #33.

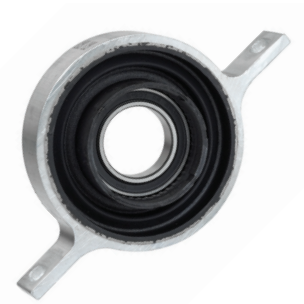
 /crpautomotive1



Drive Shaft Mounts

Rein Automotive drive shaft mounts are application-specific and match the design and function of the OE parts. If the OE part is supplied with a bearing then the Rein Automotive part will also include an OE bearing. These mounts hold the drive shaft in place while allowing it to spin and flex through normal operation. Normal wear and tear in these mounts can cause the rubber to start to fail and lose the ability to absorb shock and jolts from the drive shaft. The bearing can also wear over time and eventually seize. Make sure to inspect the drive shaft mount as part of the regular service performed on the vehicle and use Rein Automotive parts to ensure maximum life and performance.

- 20 SKUs
- VIO US over 4,076,000/Canada over 337,000
- Offered just like the OE (with or without bearings)
- We recommend replacing the bearing along with the mount



Sway Bar & Control Arm Bushings

Bushings help connect moving components in the suspension system while absorbing shocks and vibrations, allowing for a smooth and quiet ride. Sway bar and control arm bushings are among the most common that require maintenance due to the constant movement and extreme forces they need to absorb. This is why bushings should be checked as part of regular maintenance. Rein Automotive bushings are application-specific and match the design and function of the OE parts for a like-new ride.

- Over 60 SKUs
- VIO US over 23,490,000/Canada over 2,504,000
- Offered just like the OE (with or without bearings)
- We recommend replacing the bearing along with the mount



Get great tips and product information
directly from the CRP Brand Team.
INSIDE the BRANDS
[youtube.com/crpaautomotive1](https://www.youtube.com/crpaautomotive1)

For more information about any of the products in our program, contact your
CRP sales representative or visit reinautomotive.com

CRP Automotive's Brand Lineup

