

21 JUMP START

WHAT'S HOT AT CRP AUTOMOTIVE

ae Reman EPS Rack & Pinion CRP Part No. ER9110



Audi A4 / A4 Quattro 2.0L 2013-16; A5 2.0L 2012-14; A5 Quattro 2.0L 2012-17; Allroad 2.0L 2013-16; RS5 4.2L 2013-15; S4 3.0L 2013-16; S5 3.0L 2013-17 (227K VIO)

First-to-market rack replacement for PR Code QZ7 option. All internal seals and gaskets are replaced and new bellows, clamps, and heat shield mat are installed. ECU plug connector and torque sensor harness are inspected and replaced if necessary. Multiple inspection and testing steps are taken to ensure proper operation.

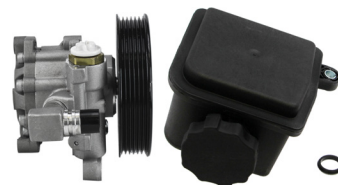
ae Reman EPS Rack & Pinion CRP Part No. ER7050



Subaru Outback 2.5L 2015; Outback 3.6L 2015 (156K VIO)

First-to-market rack completely remanufactured with all new seals, gaskets, internal bar bushings, motor coupler, bellows and clamps. Electronically tested with vehicle simulation software. Programming not required. Each unit is serviced to address a Service Bulletin issued by Subaru (04-17-17R) regarding concerns of rattling sound identified coming from the EPS rack assembly.

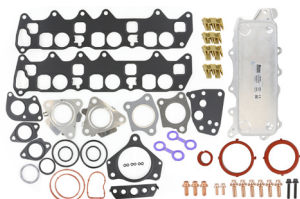
ae Power Steering Pump Kit CRP Part No. 5696NKTA



Multiple applications for Mercedes-Benz (143K VIO)

Complete kit included new AAE power steering pump, pulley, return pipe, O-ring, reservoir, and bracket. It is recommended to replace reservoir along with pump to prevent issues due to clogged reservoir screens. All AAE new pumps are sold without core charge. Each unit is 100% hydraulically tested under load in the USA.

rein Oil Cooler Replacement Kit CRP Part No. ECK0026



Multiple applications for Mercedes-Benz and Mercedes-Benz / Dodge / Freightliner Sprinter (345K VIO)

Ultimate problem solver kit to perform a complete oil cooler leak repair on popular Mercedes-Benz OM642 engines. Kit features a Nissens oil cooler plus all needed gaskets, seals, and exhaust bolts (stretch by design). Replacement seals are made with upgraded Viton™ material.

rein Transmission Service Kit CRP Part No. TSK0023



Multiple applications for Freightliner, Maybach, and Mercedes-Benz (1.27M VIO)

Offers a comprehensive solution to the commonly failing valve body conductor plate on higher mileage models. Includes new OEM valve body conductor plate, oil pan gasket, suction filter, harness plug sleeve, dipstick tube cover locking pin (one time use), dipstick tube cover O-ring, and drain plug washer.

rein Water Pump Replacement Kit CRP Part No. WPS0511



Multiple applications for Porsche (50K VIO)

Kit includes an upgraded water pump with a durable metal impeller as well as steel gasket, thermostat assembly, multi-rib drive belt, all OE accessory drive belt tensioners and idlers, and all needed hardware. Replacing these components, including the thermostat housing which is prone to heat crack, ensures that weak points have been addressed avoiding future breakdowns or reliability issues.

rein Upgraded Water Pump Kit CRP Part No. WPU0016



Multiple applications for Audi 2.0L TFSI engines (1.26M VIO)

Kit features upgraded thermostat gasket along with aluminum thermostat housing. The upgraded aluminum housing is made to stand up the harsh engine bay environment and provide a longer service life than the plastic version. Kit also includes OE belt and the hardware used to drive the water pump and reseal the assembly to the engine.

rein Upgraded Engine Coolant Hose CRP Part No. CHU0555



Multiple applications for BMW (63K VIO)

Direct replacement for OE hose with all needed clamps included for easy installation. Rein hose features upgraded and installed metal Y fitting to ensure a longer, problem-free service life of the part as compared to plastic OEM connector which commonly fails.

rein Engine Coolant Hose Kit CRP Part No. CHE0682



BMW X5 3.0L 2011-13 Gas; X6 3.0L 2011-14 (88K VIO)

Problem solver hose kit with all essential components needed for this repair, including custom designed elbow and clamps. This saves professional repair technicians time by not having to remove multiple exhaust system components to complete the job.

FOR MORE INFORMATION ABOUT ALL CRP AUTOMOTIVE PARTS,
VISIT WWW.SHOWMETHEPARTS.COM/CRP.

21 JUMP START

WHAT'S HOT AT CRP AUTOMOTIVE

rein Breather Valve CRP Part No. ABH0221



Multiple applications for Audi & Volkswagen (442K VIO)

Direct replacement for OE breather valve for easy installation. Manufactured to strict engineering quality standards to ensure proper factory crankcase pressure is restored to the vehicle's engine.

rein Valve Cover Kit CRP Part No. VCK0103



Multiple applications for BMW (1M VIO)

Valve cover includes entrapped mounting hardware, spark plug gaskets, and valve cover gasket. Kit includes above plus breather hose, cap, and eccentric shaft sensor seal. Rein valve covers were developed and tested to offer technicians an excellent solution to a repair that is becoming much more frequent due to increased use of plastic by the OE.

rein Power Steering High Pressure Feed Assembly CRP Part No. PSH0413



Nissan Altima 2.5L 2007-13 (1.3M VIO)

Direct replacement for the OE hose assembly, with pre-installed mounting brackets, rubber buffers, O-ring, and abrasion-resistant shield. OE hose tends to leak at crimping points over time. This pre-assembled hose assembly offers an efficient solution when replacing original hose.

rein Thermostat Hose CRP Part No. CHU0465



BMW 525i / 525Xi 3.0L 2006-07; 528i 3.0L 2008-10; 528Xi 3.0L 2008; 530i / 530Xi 3.0L 2006-07 (136K VIO)

Upgraded hose features a robust metal connector that is pre-mounted to the hose to save technicians time on the installation and improve overall reliability as compared to the plastic OE version.

rein Coolant Hose Metal Connector CRP Part No. CHC0609



Multiple applications for BMW (2.1M VIO)

High-quality, durable metal connector is a better-than-OE solution to the manufacturer's plastic connector thus increasing the service life of the thermostat hose. Comes complete with the needed clamp for easy installation.

rein Aluminum Bolt Kit CRP Part No. HWK0039



Multiple applications for BMW (1M VIO)

Rein aluminum torque-to-yield or "stretch" bolts are uncoated to avoid potential interference with the grounding of the starter after replacement. Kit also includes correct torque specs.

PENTOSIN Pentosin FFL-8 Transmission Fluid CRP Part No. 1090107 / 1090207



Multiple applications for Porsche (40K VIO)

Only approved First Fill DCTF specifically developed for ZF/Porsche Double Clutch Transmission with wet clutch (TE-ML-11 ZF004743). Provides optimized friction properties and best load carrying capacity even under hard conditions. Features a special clutch friction performance which makes it mandatory to be applied solely to the double clutch gear box.

FOR MORE INFORMATION ABOUT ALL CRP AUTOMOTIVE PARTS,
VISIT WWW.SHOWMETHEPARTS.COM/CRP.