

This Just In!



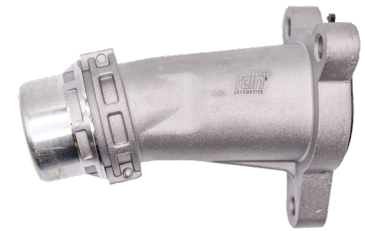
*Effective Date:
September 1, 2024*

REIN COOLANT HOSE METAL CONNECTOR

Data available through Activant/Epicor, WHI, or ShowMeTheParts.com

CRP Automotive now offers an upgraded Rein Coolant Hose Metal Connector (CRP Part No. CHU0929) for popular 2014-2021 BMW 4 Cyl. 2.0L and 2014-2019 MINI 3 Cyl. 1.5L and 4 Cyl. 2.0L engines.

Based on feedback from members of the CRP Automotive Innovation Council, we identified a component that is problematic on these modern BMW and MINI engines. The OE version of this BMW/MINI connector, made of plastic, is prone to brittleness and cracking at various points. Repeated thermal cycling and the effects of hydrolysis are common causes of the connector's failure. The upgraded Rein connector is constructed with aluminum to offer a more durable alternative to the OE and eliminate common failure points. Additionally, the Rein version comes complete with the necessary gasket for easy installation.



CRP Part No. CHU0929

FEATURES & BENEFITS:

- Direct replacement for the OE flange to ensure hassle-free installation
- Made of aluminum to offer increased durability compared to the OE part
- Upgraded materials and construction provide a longer service life compared to the original part, reducing the frequency of replacements and maintenance costs
- Includes necessary gasket for easy installation



CRP Automotive
35 Commerce Drive
Cranbury, NJ 08512

Tel. 609.578.4100 800.526.4066
Email: info@crpindustries.com
Web: www.crpautomotive.com



Rein Part No.	OE Reference	Applications	VIO US	VIO CA	Total VIO	
CHU0929	11118511205	BMW	625,254	76,227	701,481	
		230I 2017-2021 4 Cyl. 2.0L				
		230I XDRIVE 2017-2021 4 Cyl. 2.0L				
		330E 2016-2018 4 Cyl. 2.0L				
		330I 2017-2018 4 Cyl. 2.0L				
		330I GT XDRIVE 2017-2019 4 Cyl. 2.0L				
		330I XDRIVE 2017-2019 4 Cyl. 2.0L				
		430I 2017-2020 4 Cyl. 2.0L				
		430I GRAN COUPE 2017-2020 4 Cyl. 2.0L				
		430I XDRIVE 2017-2020 4 Cyl. 2.0L				
		430I XDRIVE GRAN COUPE 2017-2020 4 Cyl. 2.0L				
		530E 2018-2020 4 Cyl. 2.0L				
		530E XDRIVE 2018-2020 4 Cyl. 2.0L				
		530I 2017-2019 4 Cyl. 2.0L				
		530I XDRIVE 2017-2019 4 Cyl. 2.0L				
		740E 2017-2019 4 Cyl. 2.0L				
		X1 2016-2019 4 Cyl. 2.0L				
		X2 2018-2019 4 Cyl. 2.0L				
		X3 2018-2019 4 Cyl. 2.0L				
		X4 2019 4 Cyl. 2.0L				
		MINI				
		COOPER 2014-2019 3 Cyl. 1.5L				
		COOPER 2014-2019 4 Cyl. 2.0L				
COOPER CLUBMAN 2016-2019 3 Cyl. 1.5L						
COOPER CLUBMAN 2016-2019 4 Cyl. 2.0L						
COOPER COUNTRYMAN 2017-2019 3 Cyl. 1.5L						
COOPER COUNTRYMAN 2017-2019 4 Cyl. 2.0L						