



Upgraded Coolant Hose Metal Connector CRP Part Nos. **CHU0940** & **CHK0940**

Applications:

Multiple applications for
BMW B58 6 Cyl. 3.0L engines
For details, see showmetheparts.com/crp



Part No. CHU0940
(connector & gasket)



Part No. CHK0940
(connector & gasket
with temperature sensor)

Constructed with aluminum as a durable upgrade to the failure-prone plastic OE connector. Resists cracking, brittleness, and hydrolysis for longer service life and reduced maintenance. Available in two versions: CH0940 includes connector and gasket, and CHK0940 with added temperature sensor for easy installation.

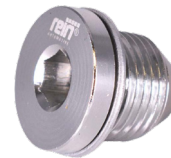


Magnetic Drain Plug Program

CRP Part Nos. **HWU0105-HWU0113**, **HWU1014**, **HWU1041**, **HWU1053**, **HWU0065**, **HWU0098**

Applications:

Multiple applications for European, Asian, & domestic vehicles
For details, see showmetheparts.com/crp



Part No. HWU0098



Part No. HWU0113



Part No. HWU0065

14 SKUs featuring aluminum construction with a flush tip magnet for an upgraded alternative to OE plug. Captive magnet attracts ferrous wear particles that bypassed the filter to prevent recirculation. Designed for precise fit and proper sealing; includes a single-use crush washer (HWU0065 has embedded O-ring).



Expansion Tank

CRP Part No. **EPT0261**

Applications:

Multiple applications for
BMW N55 engines
For details, see showmetheparts.com/crp



Expansion tank is produced from virgin plastic, meeting OE specifications and ensuring long life. Resistant to cracking and wear from heat cycles to prevent coolant loss. Direct fit for easy installation.



Expansion Tank

CRP Part No. **EPT0263**

Applications:

Multiple applications for BMW
For details, see showmetheparts.com/crp



Auxiliary tank has a low pressure coolant circuit and is produced from virgin plastic, meeting OE specifications and ensuring long life. Resistant to cracking and wear from heat cycles to prevent coolant loss. Direct fit for easy installation.

ECAT data may not be available for parts shown for 90 days after initial announcement.

**FOR MORE INFORMATION CALL 800.526.4066 AND SPEAK WITH A CRP REPRESENTATIVE
OR VISIT CRPAUTOMOTIVE.COM**



Upgraded Turbo Oil Return Line
CRP Part No. TRU0379



Applications:

Buick Encore 1.4L 2013-21; Chevrolet
Cruze 1.4L 2011-15; Cruze Limited 1.4L 2016;
Sonic 1.4L 2012-20; Trax 1.4L 2013-21

Manufactured with premium OE quality hose material. Designed to resist excessive heat, oil and ozone factors that cause premature failure. Complete with hardware and seals for easy installation. Upgrade hose is included as part of Rein TRK0022 kit.



Turbocharger Coolant Line
CRP Part No. CHT0937



Applications:

Multiple applications for
BMW & MINI
For details, see showmethethparts.com/crp

First-to-market direct-fit replacement ensures trouble-free installation. Manufactured with premium OE quality material to offer maximum protection from premature failures. Restores vehicle to safe and optimal performance levels.



Reman HPS Rack & Pinion
CRP Part No. 64305



Applications:

Ford Expedition 2009-10; F-150 2009-10;
Lincoln Navigator 2009-10

Remanufactured with OE-grade, high-temperature seals and O-rings for increased durability and performance. 100% hydraulically tested for pressure and flow. Supplied with inner tie rods and new bellows secured by OE stainless steel clamps to prevent premature failure.



Reman HPS Rack & Pinion
CRP Part No. 80607



Applications:

Chrysler 300 2011-14; Dodge Charger 2012-20

Remanufactured with OE-grade, high-temperature seals and O-rings for increased durability and performance. 100% hydraulically tested for pressure and flow. Supplied with inner tie rods and new bellows secured by OE stainless steel clamps to prevent premature failure.

ECAT data may not be available for parts shown for 90 days after initial announcement.

**FOR MORE INFORMATION CALL 800.526.4066 AND SPEAK WITH A CRP REPRESENTATIVE
OR VISIT CRPAUTOMOTIVE.COM**